



**Kingsbrook**

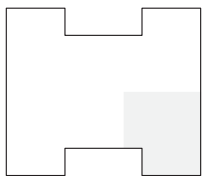
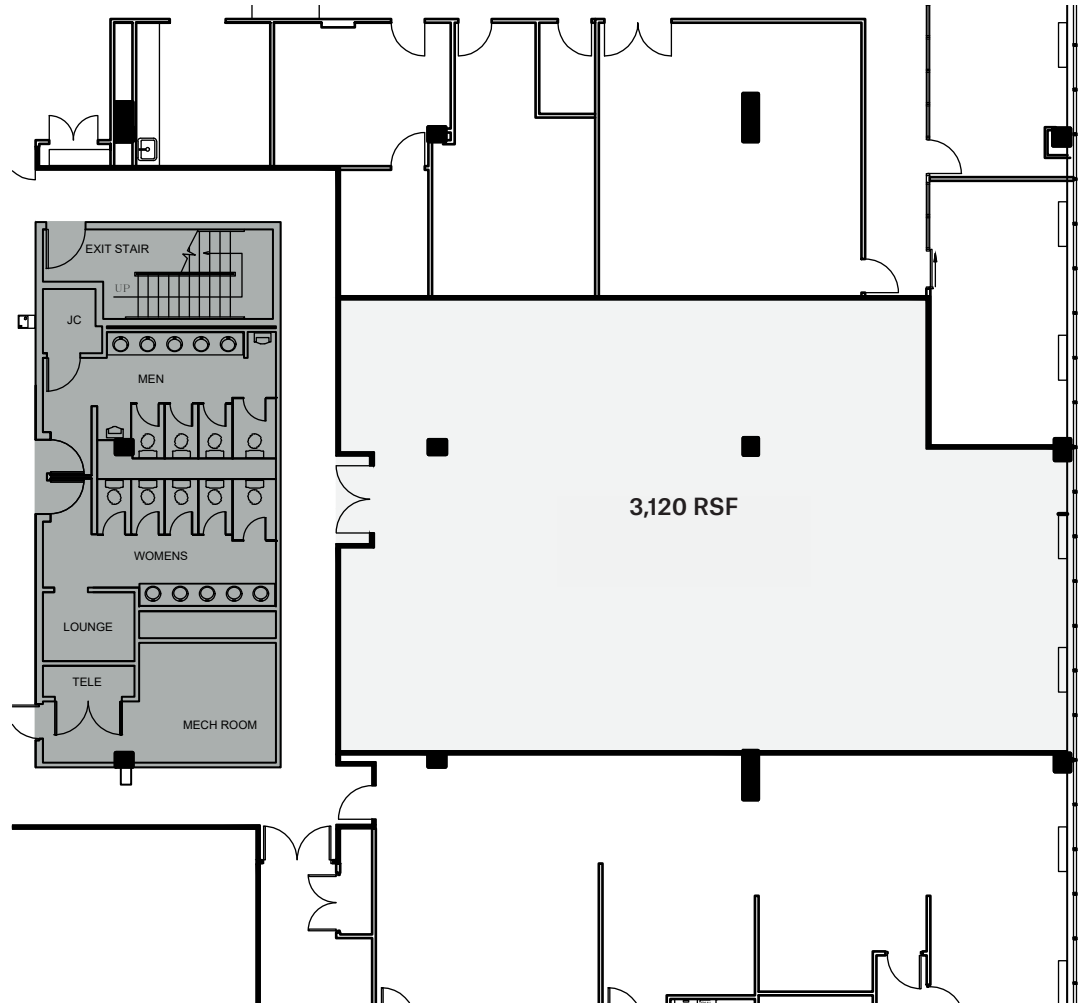
2 International Drive  
Rye Brook, NY

kingsbrookofficepark.com

## Partial 3rd Floor 3,120 RSF

### Key Details

- Ready for Tenant Installation; Currently Demolished
- 11'6" Ceiling Height (Slab-to-Slab)



Leasing Agent  
**CBRE**

Michael McCall  
203 325 5321  
michael.mccall@cbre.com

 **GEORGE COMFORT & SONS, INC**  
Commercial Real Estate Since 1919

**DRA**  
ADVISORS