



Kingsbrook

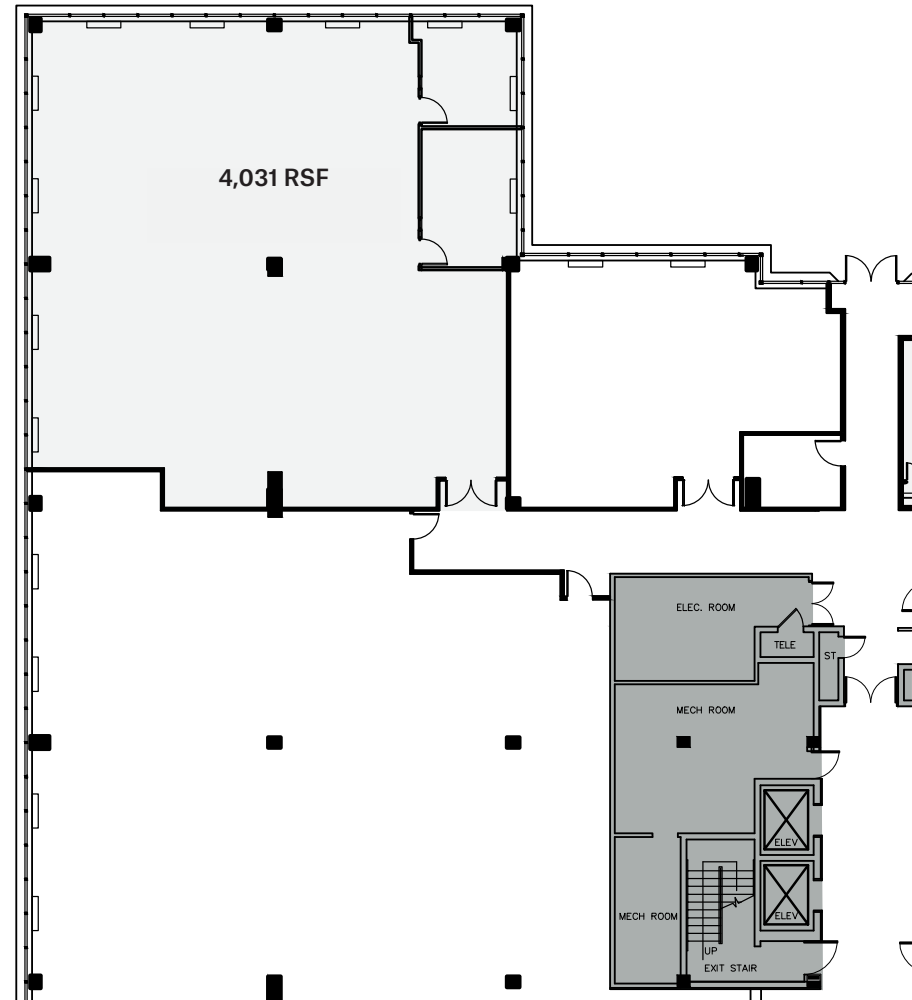
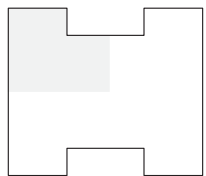
3 International Drive
Rye Brook, NY

kingsbrookofficepark.com

Partial 1st Floor 4,031 RSF

Key Details

- Double Corner Unit
- Landlord Will Demolish Existing Space and Provide Generous Work Allowance
- 11'6" Ceiling Height (Slab-to-Slab)



Leasing Agent
CBRE

Michael McCall
203 325 5321
michael.mccall@cbre.com

 **GEORGE COMFORT & SONS, INC**
Commercial Real Estate Since 1919

DRA
ADVISORS